

KEIM Design-Lasur



**Conquest of lightness –
translucent elegance with glazing techniques**

Fascinating living walls

Wall designs in glaze technique fascinate by their truly vivid character: Whether they decently shimmer or vigorously vibrate, on a facade or on interior walls, whether they are of subtle simplicity or spactacular finesse, shows the direct appeal and attracts every eye.

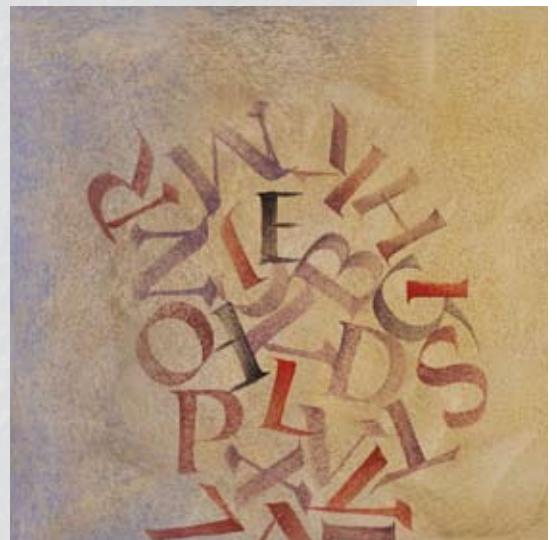
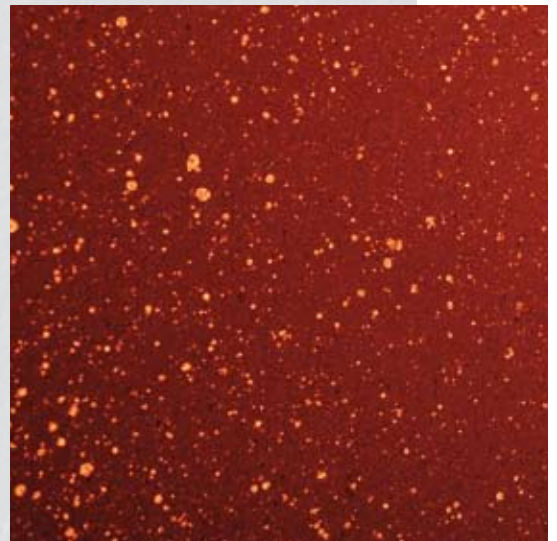
The products of the Design-Lasur-System provide unlimited possibilities to the creative designer. The transparency of the silicate KEIM Design-Lasur can be produced in various ways: From opaque to highly translucent - everthing is possible!



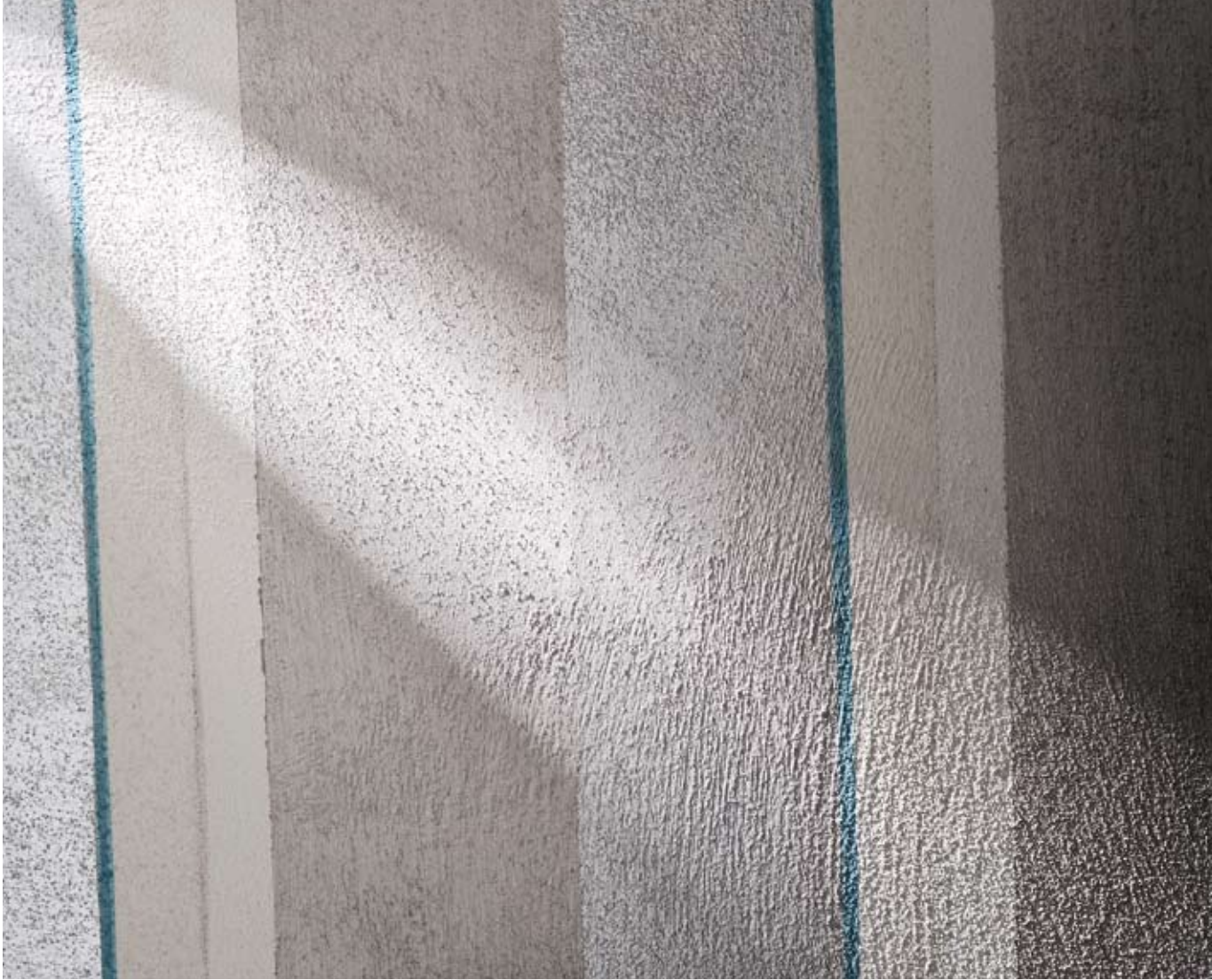
The choice of adding two different products to the Design-Lasur allows additional, special effects. The mixture with Design-Base provides a transparent application, even by roller, resulting in a fantastic colour depth.

The dilution with Design-Fixativ is recommended for a highly translucent design.

Also in combination with other creative techniques, the silicate glaze technique offers incredible options like for example calligraphy or sprinkling technique.



Elegance of mineral glaze paints



*No matter which kind of the many individual creative techniques is used:
The matt and noble character of a skilfully applied mineral glaze paint add life to a wall that it almost appears like an independent artwork.*



Glaze paints are ideally suited „to refine“ most various substrates. They provide surfaces that captivate the eye of the observer with the exciting interplay between calm homogeneity and lively transparency of a glaze finish.

Overall, the surfaces fascinate by depth and reservation, and at the same time underline the architecture of a building in a very decent way without being dominating.

Unique!

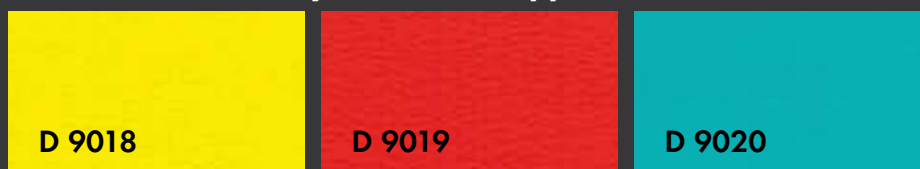
The four metallic colour shades of KEIM Design-Lasur allow fascinating effects not only in interior application, but also exterior.



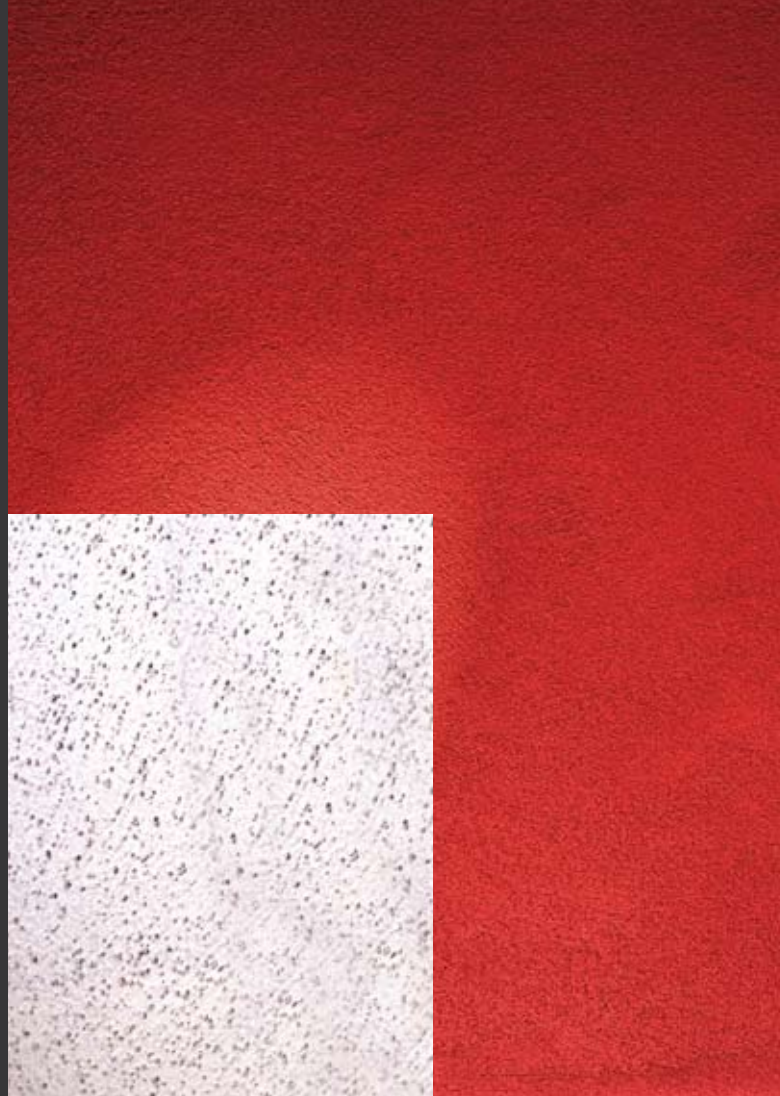
Monochrome colour shades KEIM Design-Lasur




D 9018 – D 9020 only for interior application



Note: Colour shade deviations compared the original cannot be avoided due to the printing process.





**KEIM Design-Lasur –
experience living
fascination!**

- **KEIM Design-Lasur**
*Painting material for
brilliant and demanding,
interior and exterior
application.*
- **KEIM Design-Base**
*Additive to obtain the
desired transparency*
- **KEIM Design-Fixativ**
*Additive especially for very
translucent designs*